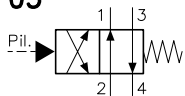
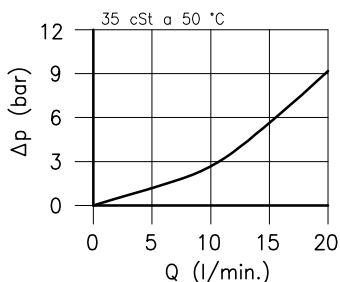
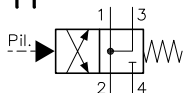


Caratteristiche tecniche

05

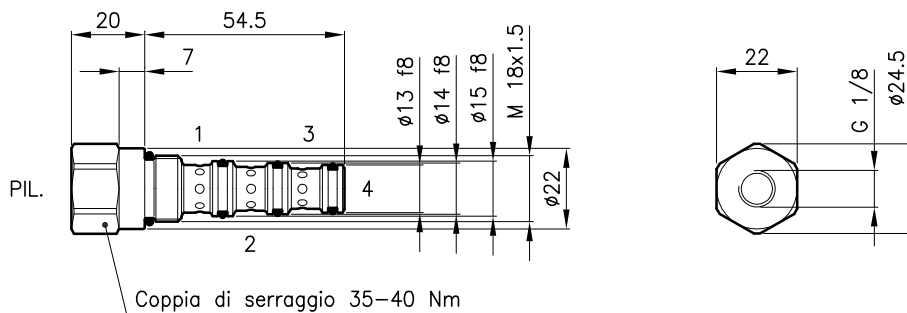


11



| | |
|---|-----------|
| Cavita' (Per dimensioni vedere catalogo 17.000) | S 20/4 |
| Portata nominale (l/min.) | 15 |
| Pressione max. (bar) | 350 |
| Pressione di pilotaggio (bar) | 3 - 5 |
| Volume di pilotaggio (cm ³) | 0.12 |
| Campo di viscosita' del fluido (cSt) | 2.8 - 380 |
| Campo temperatura del fluido (°C) | -20 +80 |
| Massa (kg) | 0.100 |
| Fluido idraulico; olio minerale HM e HV sec. ISO 6074 | |
| Filtraggio richiesto; 19/15 ISO 4466 (25 μ assoluti) | |
| Guarnizioni standard in Poliuretano e Buna N | |

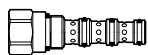
Dimensioni



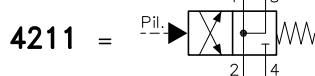
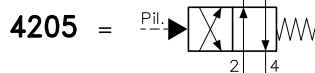
Sigle e codici di ordinazione

VDT 20/4211

VDT 20 = Tipo valvola



Circuiti



Codici gruppi completi:

VDT 20/4205 22 011 134

VDT 20/4211 22 011 135

Set guarnizioni esterne 90 620 102

Le valvole VDT 20 possono essere montate sui corpi serie 20-C4, per dimensioni vedere catalogo 16.011