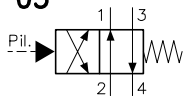
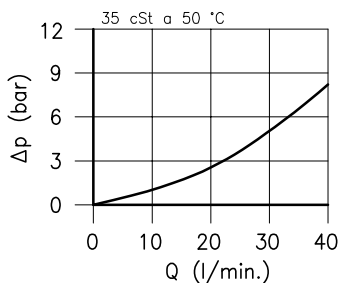
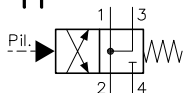


**Caratteristiche tecniche**

05

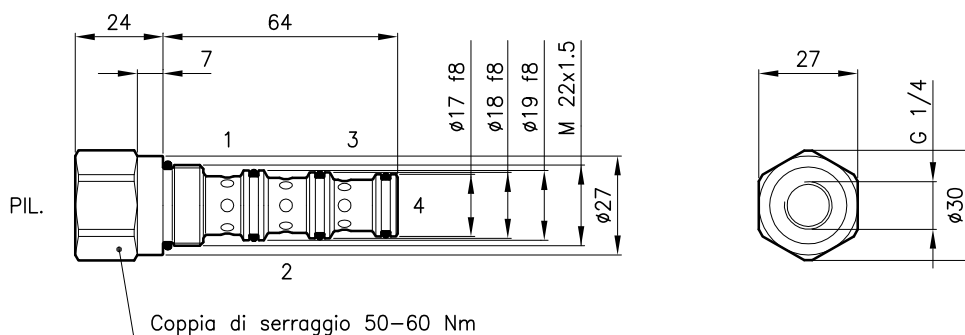


11



Cavita' (Per dimensioni vedere catalogo 17.000)	S 30/4
Portata nominale (l/min.)	30
Pressione max. (bar)	350
Pressione di pilotaggio (bar)	3 - 5
Volume di pilotaggio (cm <sup>3</sup> )	0.3
Campo di viscosita' del fluido (cSt)	2.8 - 380
Campo temperatura del fluido (°C)	-20 +80
Massa (kg)	0.180
Fluido idraulico; olio minerale HM e HV sec. ISO 6074	
Filtraggio richiesto; 19/15 ISO 4466 (25 μ assoluti)	
Guarnizioni standard in Poliuretano e Buna N	

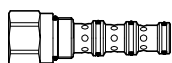
**Dimensioni**



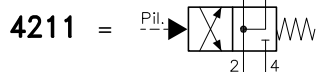
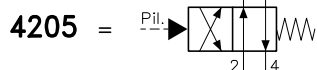
**Sigle e codici di ordinazione**

**VDT 30/4211**

VDT 30 = Tipo valvola



Circuiti



Codici gruppi completi:

VDT 30/4205                    32 011 118

VDT 30/4211                    32 011 119

Set guarnizioni esterne 90 620 105

Le valvole VDT 30 possono essere montate sui corpi serie 30-C4, per dimensioni vedere catalogo 16.011