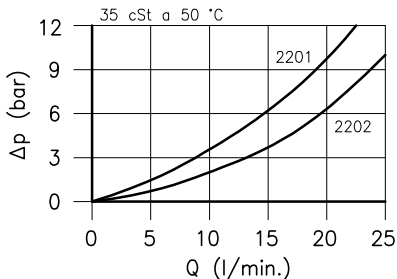
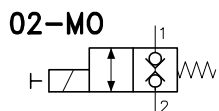
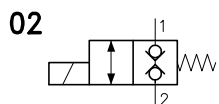
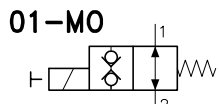
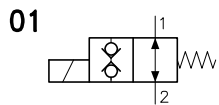
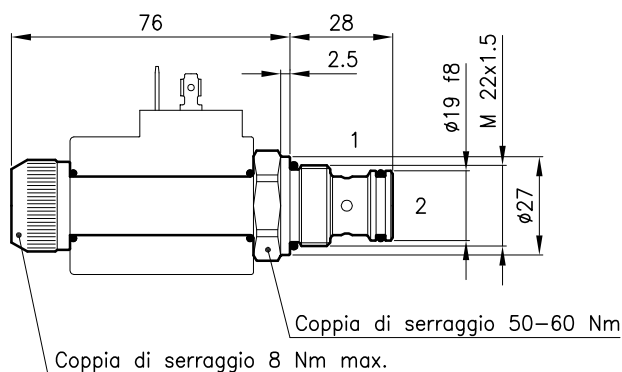
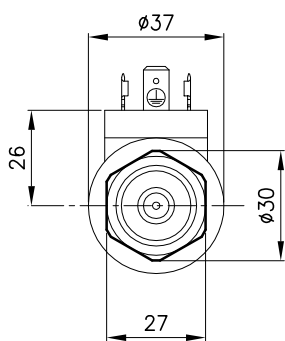


Caratteristiche tecniche



Cavita' (Per dimensioni vedere catalogo 17.000)	S 30/2
Portata max. 01/01-MO (l/min.)	20
Portata max. 02/02-MO (l/min.)	25
Pressione max. (bar)	315
Tempo di commutazione (ms) <small>Varia in funzione del circuito, della pressione, della portata e della viscosita' del fluido.</small>	30 - 60 <small>(Valore medio)</small>
Campo di viscosita' del fluido (cSt)	2.8 - 380
Campo temperatura del fluido (°C)	-20 +80
Massa (kg)	0.210
Fluido idraulico; olio minerale HM e HV sec. ISO 6074	
Filtraggio richiesto; 19/15 ISO 4466 (25 μ assoluti)	
Guarnizioni standard in Poliuretano e Buna N	

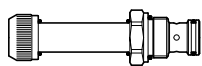
Dimensioni



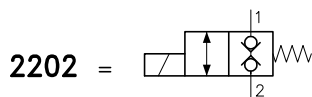
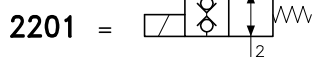
Sigle e codici di ordinazione

ECD 30/2202-MO

ECD 30/22.. = Tipo valvola



Circuiti



MO = Comando d'emergenza
(Omettere se non richiesto)

Codici gruppi completi:

ECD 30/2201	35 011 129
ECD 30/2201-MO	35 011 145
ECD 30/2202	35 011 117
ECD 30/2202-MO	35 011 131
Set guarnizioni esterne	90 620 103

Le valvole ECD 30/22.. possono essere montate sui corpi serie 30-L0, per dimensioni vedere catalogo 16.010

Sulle valvole ECD 30 debbono essere montate le Bobine serie B30, per dimensioni, caratteristiche e codici vedere cataloghi 09.900 e 09.901.