

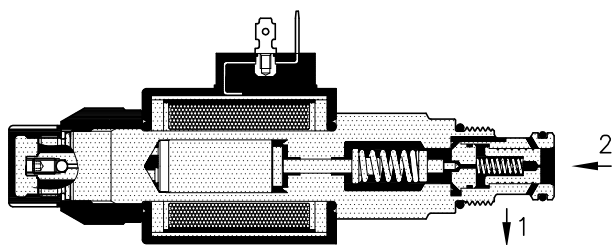
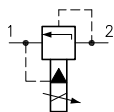
Technical features

Pilot pressure relief valves type PPI 70 are regulated from proportional solenoid which is controlled by a remote electronic card and modifies setting, changing the piloting system acting force.

By de-energised valve, flow coming from 2 is drained in 1 at a minimum setting pressure.

Operating on potentiometer through electronic card allows to act on proportional solenoid and it's possible to obtain numberless precise and repeatable adjustments.

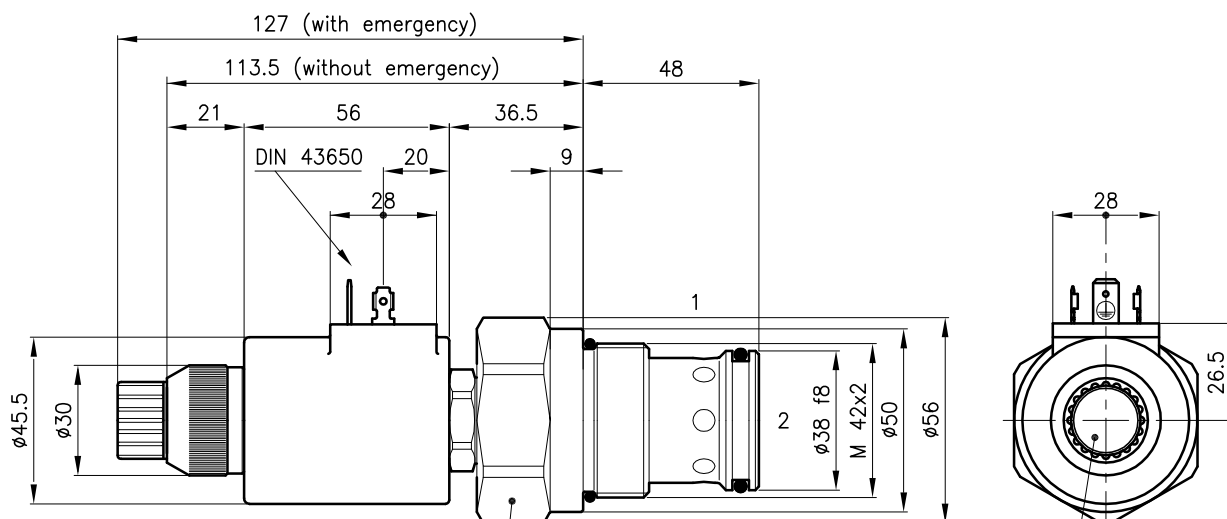
For electronic control card technical features see from General Catalogue page n. 10.250.



Cavity	(For dimensions see catalogue 17.000)	S 70/2
Max. flow	(l/min.)	320
Max. inlet pressure	(bar)	350
Max. pressure on line 1	(bar)	175
Fluid viscosity range	(cSt)	2.8 – 380
Fluid temperature range	(°C)	-20 +80
Max. leakage	(cm ³ /min.)	25
Mass	(kg)	0.940
Hydraulic fluid; mineral oil HM and HV ISO 6074		
Recommended filtration; 19/15 ISO 4466 (25 µ absolutes)		
Standard seals in Polyurethane and Buna N		

Nominal voltage	(Volt)	12	24
Current range	(mA)	1600	800
Nominal power	(Watt)	22	
Resistance	(Ω)	6.8	26
Insulation class	(VDE 0580)	F 155	
Rating	(ED%)	100	
Protection class	(DIN 40050)	IP 65	

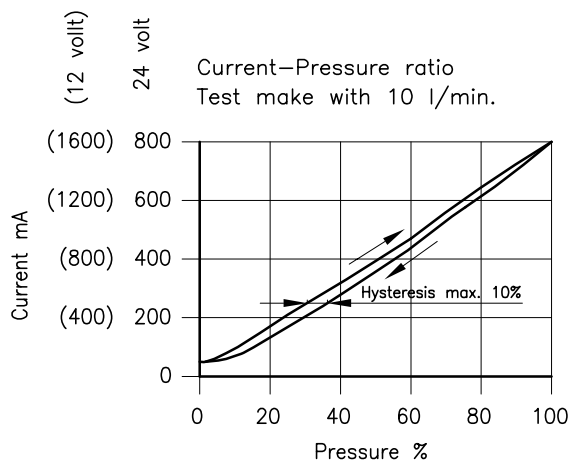
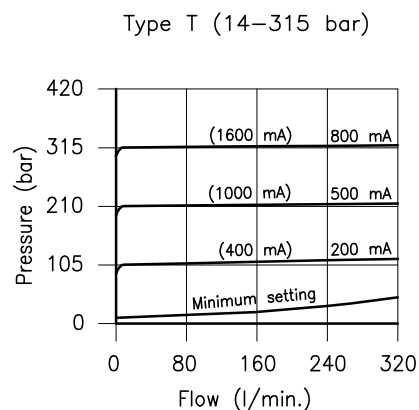
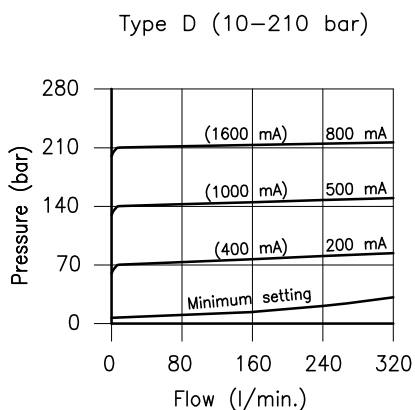
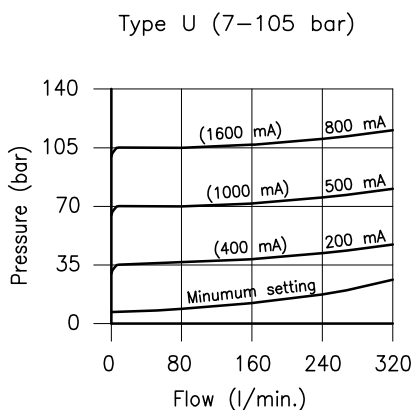
Dimensions



Torque 180–210 Nm
Hex. 50

Unscrew the cap to access the emergency and the air vent see catalogue 10.900

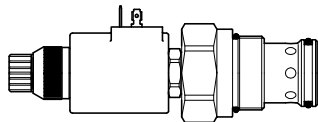
TYPICAL RELIEVING PRESSURE (2 to 1 at Various of Control Current)



Ordering informations

PPI 70/D-24C-22H-W

PPI 70 = Valve type



Setting range

U = 7 – 105 bar

D = 10 – 210 bar

T = 14 – 315 bar

Voltage and power

12C-22H = 12 Volt DC

24C-22H = 24 Volt DC

W = Optional without Emergency

Codes:

PPI 70/U-12C-22H	75 011 108
PPI 70/D-12C-22H	75 011 109
PPI 70/T-12C-22H	75 011 110

PPI 70/U-24C-22H	75 011 111
PPI 70/D-24C-22H	75 011 112
PPI 70/T-24C-22H	75 011 113

External seals kit	90 620 109
--------------------	------------

Code only coil:

Coil P50-24C-22H	55 125 114
Coil P50-12C-22H	55 125 113

PPI 70 valves can be assembled on standard bodies 70-LO series; for dimensions see catalogue 16.010