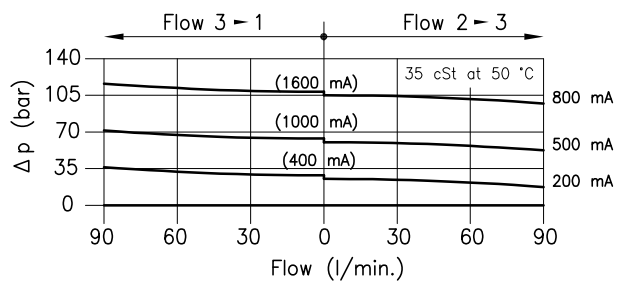
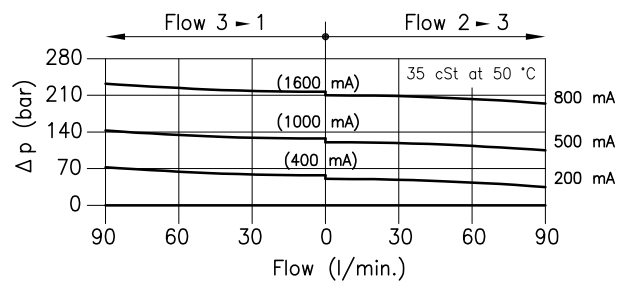


TYPICAL VALVES FEATURE AT VARIOUS OF CONTROL CURRENT

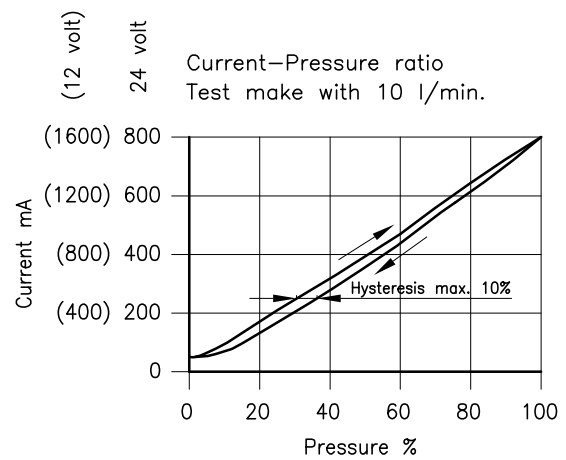
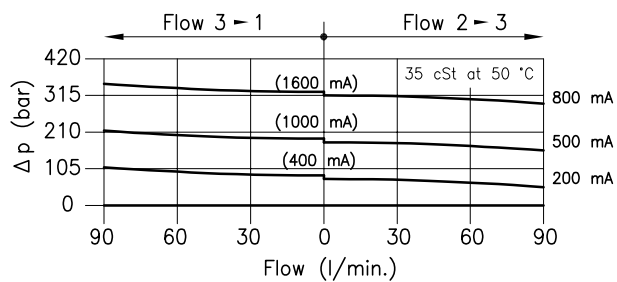
Type U (7–105 bar)



Type D (10–210 bar)



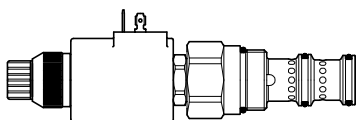
Type T (14–315 bar)



Ordering informations

PLP 50/D-24C-22H-W

PLP 50 = Valve type



Setting range

U = 7 – 105 bar

D = 10 – 210 bar

T = 14 – 315 bar

Voltage and power

12C-22H = 12 Volt DC

24C-22H = 24 Volt DC

W = Optional without Emergency

Codes:

PLP 50/U-12C-22H 55 011 150

PLP 50/D-12C-22H 55 011 151

PLP 50/T-12C-22H 55 011 152

PLP 50/U-24C-22H 55 011 153

PLP 50/D-24C-22H 55 011 154

PLP 50/T-24C-22H 55 011 155

External seals kit 90 620 107

Code only coil:

Coil P50-24C-22H 55 125 114

Coil P50-12C-22H 55 125 113

PLP 50 valves can be assembled on standard bodies 50-C3 series; for dimensions see catalogue 16.010