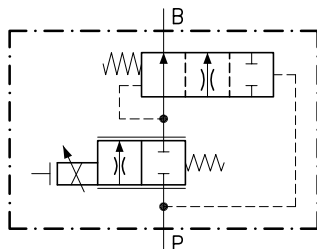


Technical features

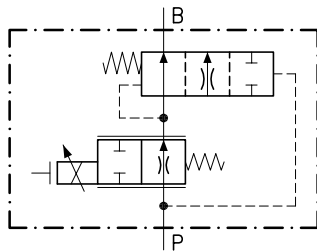
Proportional solenoid valves PPQ 30/2 are flow regulator compensated, normally closed or open, which is controlled by a remote electronic card.

Operating on potentiometer through electronic card allows to act on proportional solenoid and it's possible to obtain an infinitude of different regulations with great precision and repeatability. The logic element ELP 30/Q2 allows to maintain the flow constant even if the pressure changes.

For technical features of electronic control cards see from General Catalogue page n. 10.250.



22 (NC)

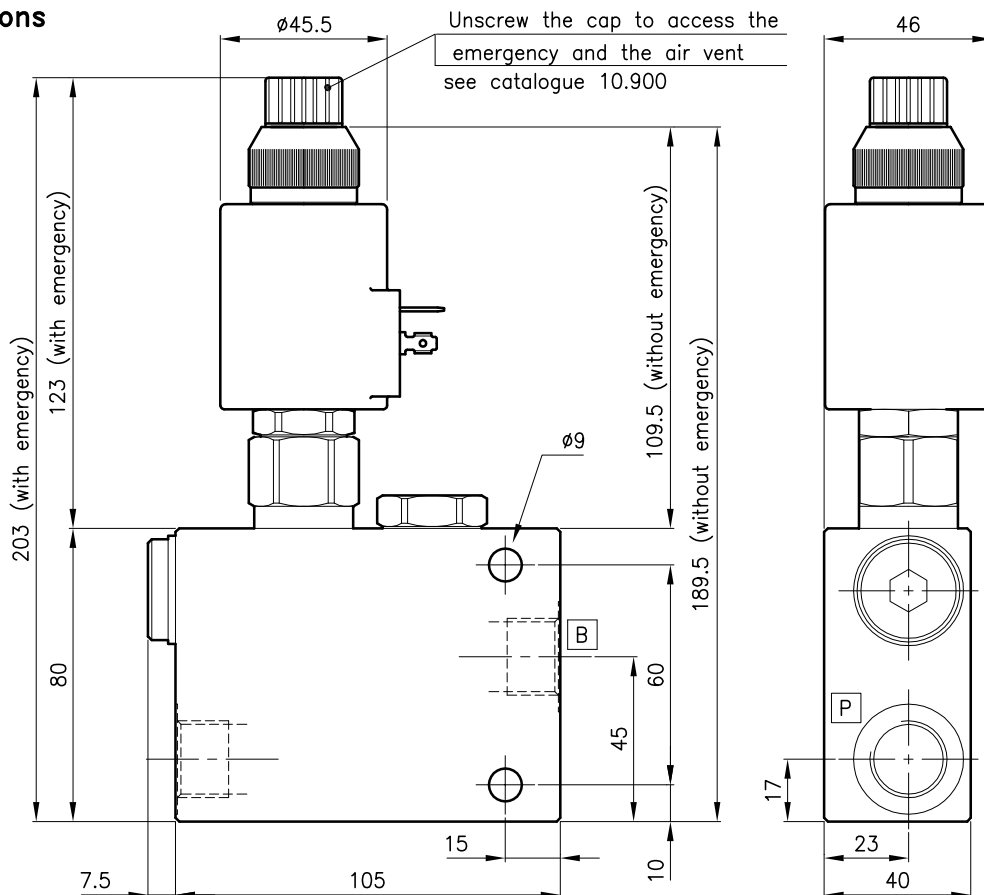


21 (NA)

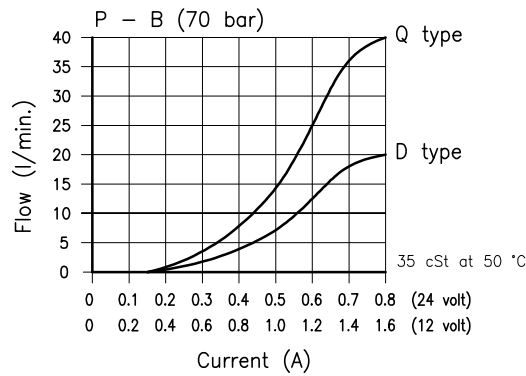
Valves	(For features see catalogue 16.160)	PSS 30
	(For features see catalogue 11.100)	ELP 30/Q2
Max. flow D type	(l/min.)	0 - 20
Max. flow Q type	(l/min.)	0 - 40
Max. pressure	(bar)	315
Fluid viscosity range	(cSt)	2.8 - 380
Fluid temperature range	(°C)	-20 +80
Max. leakage	(cm ³ /min.)	100
Mass	(kg)	1.550
Hydraulic fluid; mineral oil HM and HV ISO 6074		
Recommended filtration; 19/15 ISO 4466 (25 μ absolutes)		
Standard seals in Polyurethane and Buna N		

Nominal voltage	(Volt)	12	24
Current range	(A)	1.6	0.8
Nominal power	(Watt)	22	
Resistance	(Ω)	6.8	26
Insulation class	(VDE 0580)	F 155	
Rating	(ED%)	100	
Protection class	(DIN 40050)	IP 65	

Dimensions

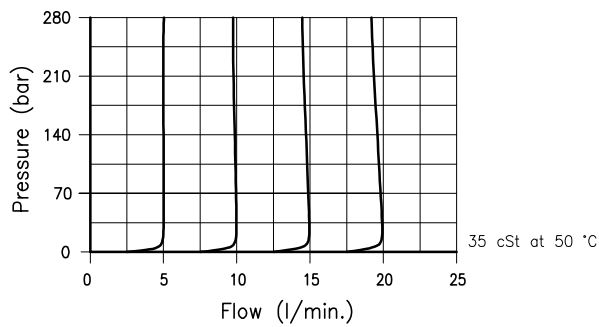


TYPICAL VALVES FEATURE AT VARIOUS OF CONTROL CURRENT

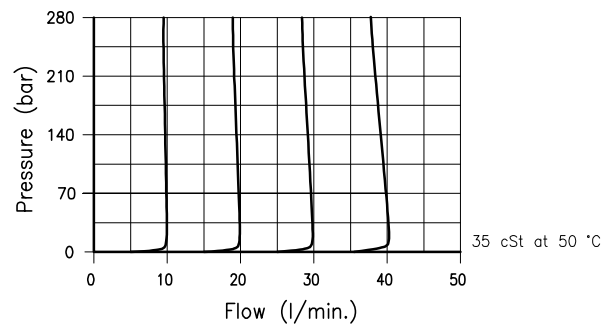


TYPICAL VALVES FEATURE AT VARIOUS OF PRESURE

"D" Version (20 l/min.)



"Q" Version (40 l/min.)



Ordering informations

PPQ 30/22-D-24C-22H-B08-W

PPQ 30 = Valve type

Circuit

22 = Normally closed

21 = Normally open

Flow range

D = 0 - 20 l/min.

Q = 0 - 40 l/min.

Voltage and power

12C-22H = 12 Volt DC

24C-22H = 24 Volt DC

W = Optional without Emergency

Standard ports

B08 G 1/2 ISO 228

Codes:

PPQ 30/22-D-12C-22H-B08 35 011 202

PPQ 30/22-Q-12C-22H-B08 35 011 201

PPQ 30/22-D-24C-22H-B08 35 011 200

PPQ 30/22-Q-24C-22H-B08 35 011 199

PPQ 30/21-D-12C-22H-B08 35 011 251

PPQ 30/21-Q-12C-22H-B08 35 011 252

PPQ 30/21-D-24C-22H-B08 35 011 253

PPQ 30/21-Q-24C-22H-B08 35 011 254

Only body code:

Body type 30-CSL 17-B08 38 144 149