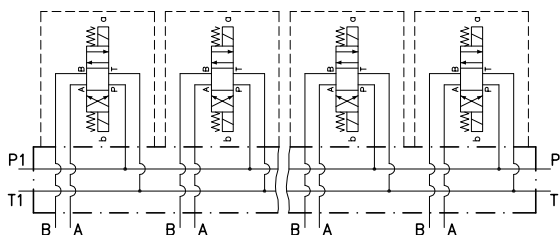
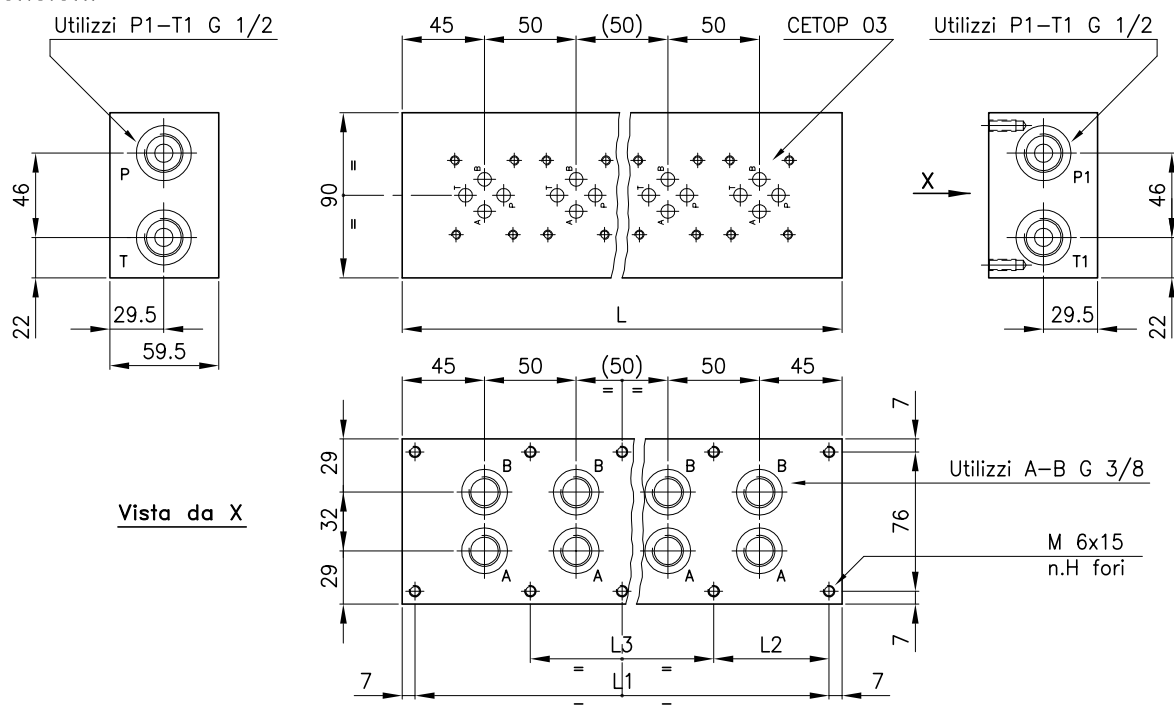


Caratteristiche tecniche



Sono piastre di base modulari con collegamento in parallelo per elettrovalvole con attacco CETOP R35 H-4.2-4-03. Versione standard in alluminio (pressione max. 315 bar), sono disponibili a richiesta in acciaio.

Dimensioni

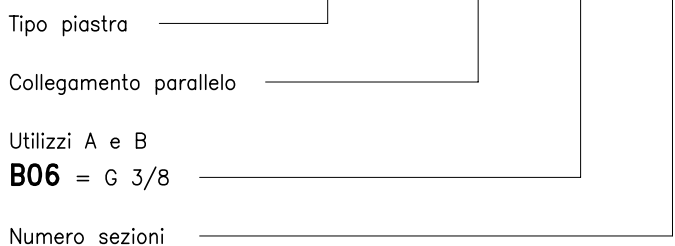


Tipo	L	H	L1
CMT 30-P0-B06/2	140	4	126
CMT 30-P0-B06/3	190	4	176
CMT 30-P0-B06/4	240	4	226
CMT 30-P0-B06/5	290	4	276

Tipo	L	H	L1	L2	L3
CMT 30-P0-B06/6	340	6	326	/	/
CMT 30-P0-B06/7	390	8	376	113	150
CMT 30-P0-B06/8	440	8	426	113	200
CMT 30-P0-B06/10	540	8	526	163	200

Sigle e codici di ordinazione

CMT 30-P0-B06/5



Codici gruppi completi:

CMT 30-P0-B06/2	38	144	183
CMT 30-P0-B06/3	38	144	184
CMT 30-P0-B06/4	38	144	185
CMT 30-P0-B06/5	38	144	186
CMT 30-P0-B06/6	38	144	187
CMT 30-P0-B06/7	38	144	188
CMT 30-P0-B06/8	38	144	189
CMT 30-P0-B06/10	38	144	190