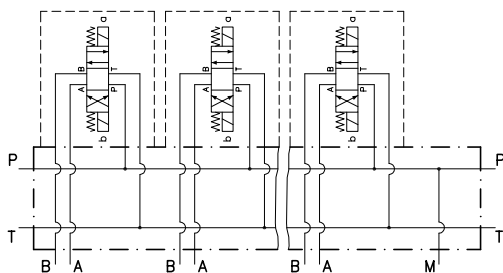
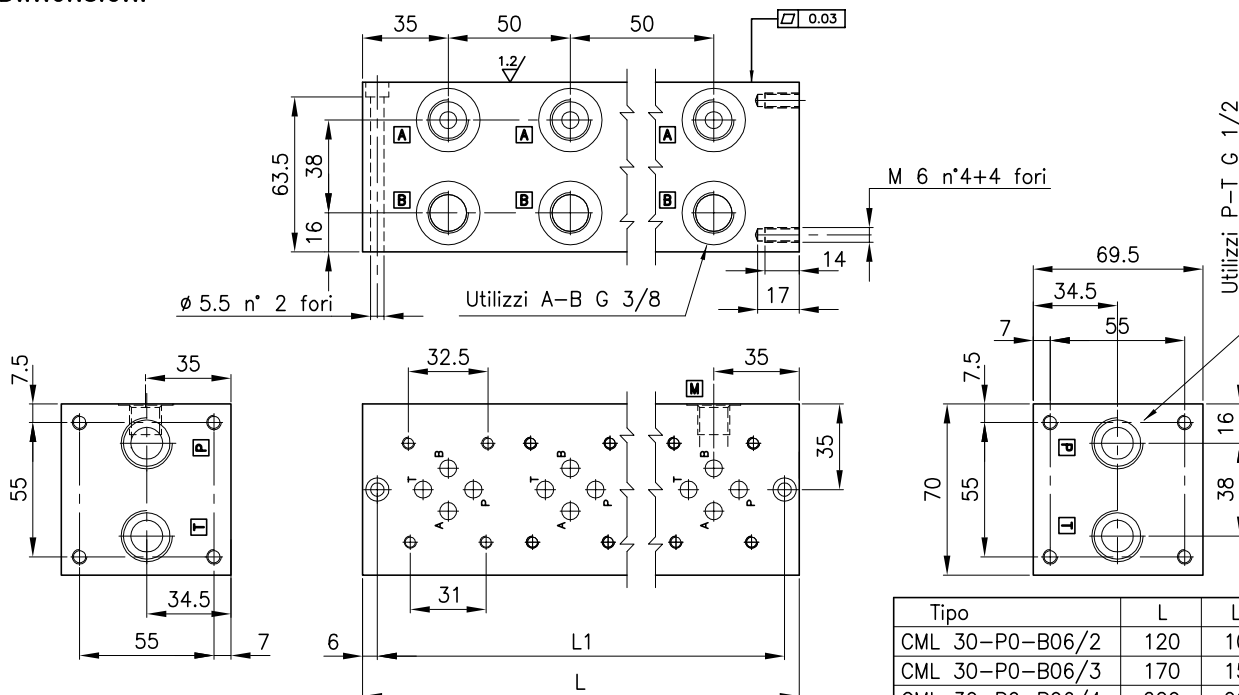


Caratteristiche tecniche



Sono piastre di base modulari con collegamento in parallelo per elettrovalvole con attacco CETOP R35 H-4.2-4-03. Versione standard in alluminio (pressione max. 315 bar), sono disponibili a richiesta in acciaio.

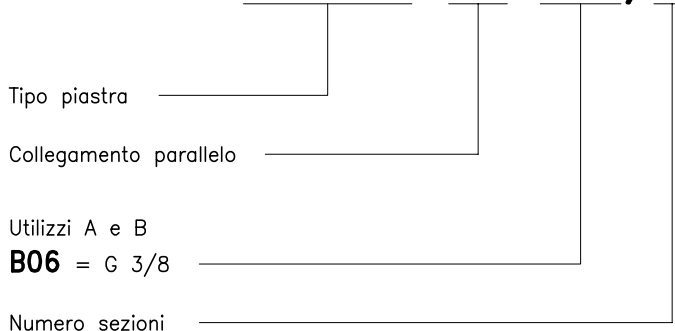
Dimensioni



Tipo	L	L1
CML 30-P0-B06/2	120	108
CML 30-P0-B06/3	170	158
CML 30-P0-B06/4	220	208
CML 30-P0-B06/5	270	258
CML 30-P0-B06/6	320	308
CML 30-P0-B06/7	370	358
CML 30-P0-B06/8	420	408
CML 30-P0-B06/9	470	458
CML 30-P0-B06/10	520	508

Sigle e codici di ordinazione

CML 30-P0-B06/3



Codici gruppi completi:

CML 30-P0-B06/2	38 144 212
CML 30-P0-B06/3	38 144 213
CML 30-P0-B06/4	38 144 214
CML 30-P0-B06/5	38 144 215
CML 30-P0-B06/6	38 144 216
CML 30-P0-B06/7	38 144 217
CML 30-P0-B06/8	38 144 218
CML 30-P0-B06/9	38 144 219
CML 30-P0-B06/10	38 144 220